

JONGNO TOWER



HYPERNEX

 **WOOJONG**
ENTRY

WOOJONG ENTRY Co., Ltd.

CEO	Hyung-Wook Wang
Established	February 01, 1992 (Formerly by Yoon Sung Corp, February 05, 1982)
Location	KHV 1F 177, Sagimakgol-ro, Jungwon-gu, Seongnam-si, Gyeonggi-do, Korea
Business Areas	Revolving door, Automatic door, Speed gate

40

40 years of
revolving door
manufacturing

**Korea's
No.1**

Revolving door
Manufacturing and
Installation

**The world's
First**

Development of
Oval wings,
Center-open
Revolving door

**Korea's
First**

Development of
Automatic, 2wing
Revolving door
CE certified

30

Revolving door
patents



InterContinental Saigon

In 1982, the history of the Korean revolving door began by creating the world's first curved revolving door that eliminated the inconvenience of hitting your feet when passing by the revolving door.

Woojong Entry acquired international patents in the U.S., Britain, France, Germany, and continued research and development to launch new products such as Korea's first large automatic revolving door, the world's second oval revolving door, and Korea's first two-wing revolving door.

In 2006, we developed the world's first central open revolving door hyper-neck wide open, overcoming the limitations of existing revolving doors, and even revolutionized the revolving door.

It led the domestic revolving door market by constructing revolving doors at more than 1,200 sites at home and abroad.

As Korea's No. 1 revolving door company with all lineups from small to large automatic, 2wing, central open, and security, we will challenge the world market and grow into a global revolving door company.

Company history

- 1982 Development of a oval wings revolving door ("Oval Wings")for the first time in the world.
- 1985 Obtained Patent in USA, UK, Germany, France, Korea (Oval Wings Revolving door)
- 1997 Development of a grand revolving door ("Hypernex") for the first time in Korea
- 1999 Development of a oval shaped revolving door ("Oval Wings")for the second time in the world)
- 1999 Acquired ISO 9001 Certification
- 2000 Development of a 2-wing revolving door ("Hypernex-Multi")for the first time in Korea
- 2002 Acquired Venture Business Certification by the Korean government
- 2003 Acquired excellent quality product Certification from the Korean Public Procurement Service
- 2006 Development of a automatic center opening revolving door ("Hypernex-Wide-open")
for the first time in the world
- 2010 Acquired LEED NFRC400 Certification (Architectural Testing, USA)
- 2015 Acquired CE Certification for the first time in Korea (TUV Rheinland)



Domestic patent : 30

International patent : 10



제 079788호
회전문의 정위치 자동정지장치



제 0355812호
회전문 윈도우 개방위치 유지장치



제 0355813호



제 0511065호
글러치를 이용한 자동회전문의 동력전달구조



제 0511832호
자동회전문의 조명부 전원공급장치



제 0511833호
자동회전문의 비상시 전원 자동 단락장치



제 32893호
회전문의 자동제어장치



제10-0638281호
회전날개의 분산 전개구조를 갖는 자동회전문



제10-0641268호
분산전개구조를 갖는 자동회전문용 회전날개의 자동접철구조



제10-0641269호
분산전개구조를 갖는 자동회전문용 회전날개의 회전동력구조



제10-0753633호
슬라이드에 의한 회전날개의 단부 고정구조를 갖는 자동회전문



제10-0756645호
자동회전문의 전개형 회전날개용 코너 마감구



제10-0785336호
터치스크린을 이용한 자동회전문 제어/경보장치



제 084286호
회전문의 조명장치



제 0359389호
내장슬라이딩도어를 갖는 자동회전문의 각지에서 설치구조



제30-0442081호
자동회전문용 슬라이딩 구동장치



제30-0442080호
자동회전문용 슬라이딩 동력전달구



제30-046586호
자동회전문용 슬라이딩 레일



제30-0460870호
자동회전문용 회전도어



제10-0641268호
분산전개구조를 갖는 자동회전문



1033779
국제회 회전문
(영국 / U.K)



862306
국제회 회전문
(프랑스 / France)



MR 26028
국제회 회전문
(독일 / Germany)



Des 305152
국제회 회전문
(미국 / USA)



Nr. 11 2006 001 945
중심개방형 회전문
(독일 / Germany)



ZL 2006 1 008393.0
중심개방형 회전문
(중국 / China)



PCT/KR2006/001952
회전날개의 분산 전개구조를 갖는 자동회전문



PCT/KR2006/001955
분산전개구조를 갖는 자동회전문용 회전날개의 자동접철구조



PCT/KR2006/001956
분산전개구조를 갖는 자동회전문용 회전날개의 자동접철구조



I6338KRO
회전날개의 분산 전개구조를 갖는 자동회전문



NFRC 400-2010 TEST REPORT

Rendered to:

CNC TESTING LABORATORY
WOOJONG ENTRY CO. LTD

STATE TOWER NAMSAN

PRODUCT TYPE: Stainless Steel Revolving Entrance Door



Title	Summary of Results
Operating Force (Initiate motion)	NA
Operating Force (Maintain motion)	NA
Air Leakage Resistance Test	1.5 L/s/m ² (0.30 cfm/ft ²)

Reference should be made to Report No. A3974.01-301-47 for complete test specimen description and data.

2534 E. Jensen Ave
Fresno, CA 93705
phone: 559-233-8705
fax: 559-233-8360
www.archtest.com

LEED NFRC400 Certification
(Architectural Testing, USA 2010)

- Performance test of revolving door airtightness



C E R T I F I C A T E
of Conformity


TÜVRheinland®

Registration No.: AK 50294057 0001

Report No.: 50013703 001

Holder: WOOJONG ENTRY Co., Ltd.
(Keumkang Hightech-Valley 1F, 133-1)
177, Sagimakgol-ro, Jungwon-gu,
Seongnam-si, Gyeonggi-do, 462-724
Rep. of Korea

Product: Control Unit
Revolving Door Controller

Identification: Type Designation: RDCS-1992
Serial No.: n.a. (prototype)

Tested acc. to: EN 60335-2-103:2003+A11

The certificate of conformity refers to the above mentioned product. This is to certify that the specimen is in conformity with the assessment requirement mentioned above. This certificate does not imply assessment of the production of the product and does not permit the use of a TÜV Rheinland mark of conformity.

Date: 13.02.2015


Certification Body

Dr. R. Frankenberger

TÜV Rheinland LGA Products GmbH - Tillystraße 2 - 90431 Nürnberg

**CE Certification
(TUV Rheinland 2015)**

Accredited by Member of the IAF MLA for QMS



Certificate No : KQC-1256

KAB-QC-04

CERTIFICATE

Quality Management System

WOOJONG ENTRY Co., Ltd.

#105, 177, Sagimakgol-ro, Jungwon-gu, Seongnam-si, Gyeonggi-do, Korea

Korea Productivity Center Quality Assurance certifies that the Quality Management System of the above organization has been assessed and found to be in accordance with the requirements of the quality standards and scope of certification detailed below.

Standards

KS Q ISO 9001 : 2015 / ISO 9001 : 2015

Scope of Certification

Design, Development, Production and Installation of Revolving Door

Valid Period : July 19, 2020 - July 18, 2023

- This certificate is valid only if the organization meets the requirement continually
- Certification Validity information is available at www.kpcqa.or.kr

Date of Issue : July 10, 2020

모창선

Chang-Sun, Mo
Lead Auditor

정위식

Eui-Sik, Jeong
CEO

kpc KOREA
PRODUCTIVITY CENTER QUALITY ASSURANCE

12F, Floor KCCL building, 39, Sejong-daero, Jung-gu, Seoul, Korea
www.kpcqa.or.kr / Tel.82-2-738-9001

The use of Accreditation Mark KAB indicates Accreditation in respect of those activities covered by the Accreditation Certificate Number KAB-QC-04

ISO 9001

(Korea productivity quality assurance)

HYPERNEX *Wide – open*

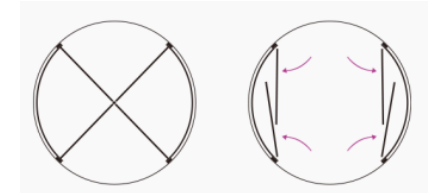
Centrally open revolving door



When the door is opened



The world's first Hypernex Wide Open is a innovative revolving door that automatically opens outward to allow large numbers of people as well as cars. (International patent)



HYPERNEX

Grand type revolving door



Hypernex is a revolving door that protects the pleasant indoor environment and allows convenient and safe passage of many people with large spaces and safety devices.

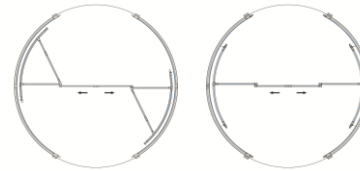


HYPERNEX *Multi*

2wing revolving door



2wing revolving door Hypernex multi provides a large space for wheelchairs, carts, and moving beds, and is a multi-rotating door that can also function as an automatic door

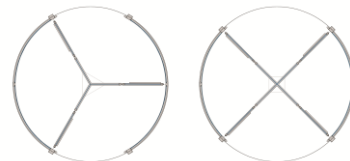


HYPERNEX *Glass roof*

Glass roof revolving door



The hypernex glass roof with a view of the sky from the ceiling refreshes all passers-by with a simple design.

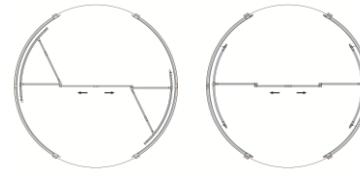


HYPERNEX *Multi*

2wing revolving door



2wing revolving door Hypernex multi provides a large space for wheelchairs, carts, and moving beds, and is a multi-rotating door that can also function as an automatic door

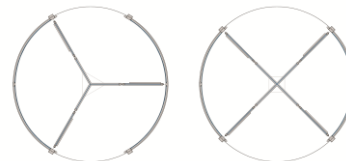


HYPERNEX *Glass roof*

Glass roof revolving door



The hypernex glass roof with a view of the sky from the ceiling refreshes all passers-by with a simple design.

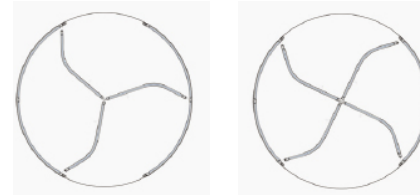


Oval Wings

Curved wing revolving door



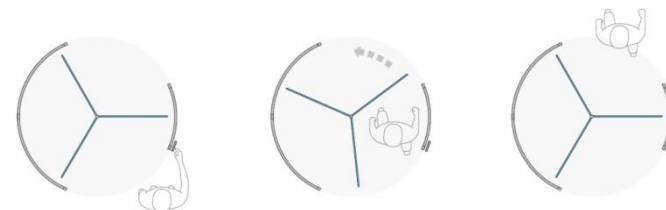
Oval wings is first curved revolving door that eliminated the inconvenience of hitting your feet when passing by the revolving door



Security Revolving door



Security revolving door is a complete access control solution that allows only one approved person to pass through and allows non-approval access even when a passerby comes out from the inside.



Special revolving door

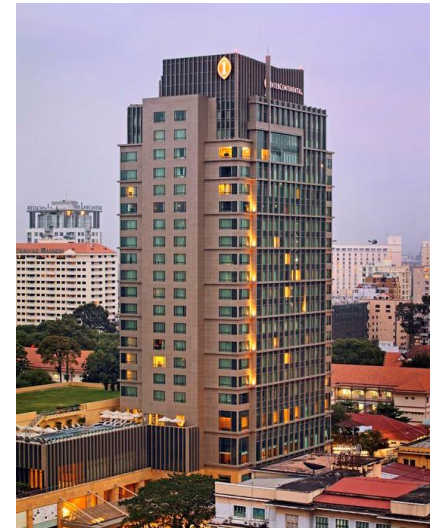
We provide all solutions for revolving doors to meet customer needs and on-site situations.



Special revolving door that encloses a building pillar

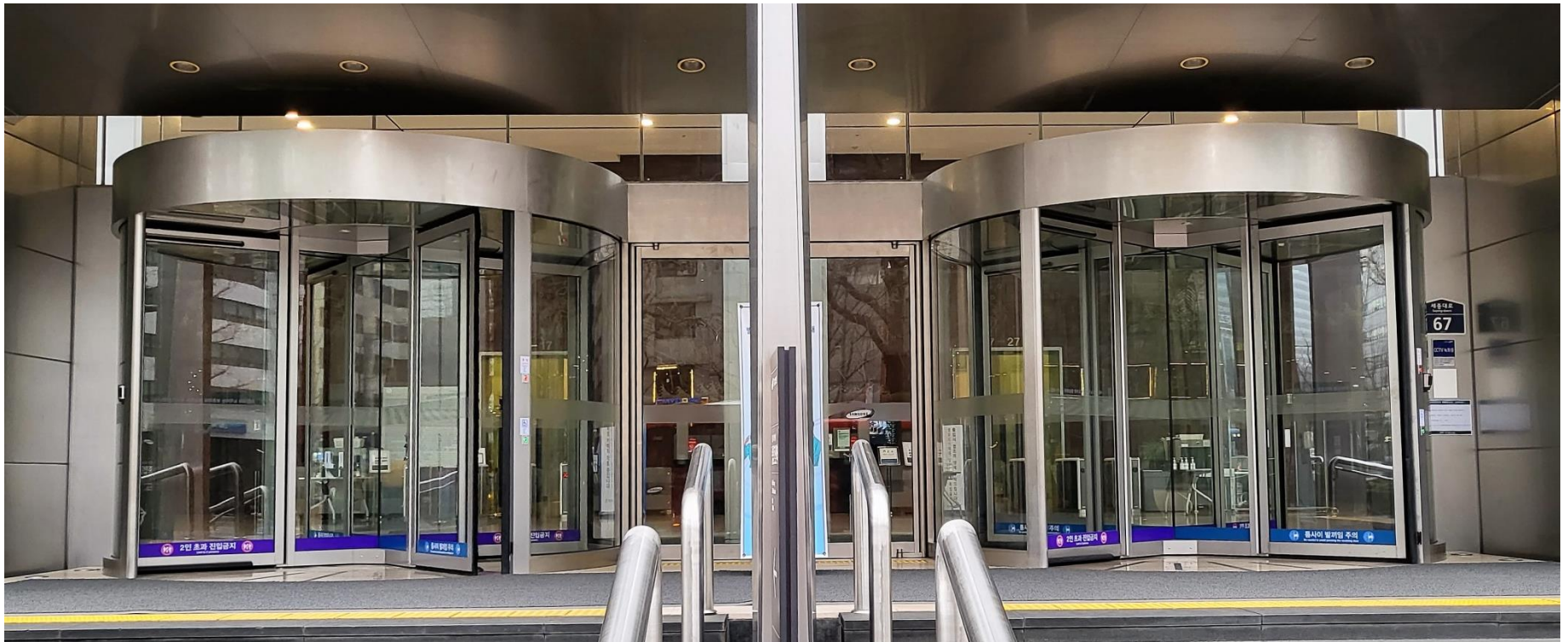
InterContinental Saigon, Vietnam

HYPERNEX *Multi* D3600



Samsung Group Headquarters

HYPERNEX D4280 4 sets



LG Twin tower (LG Group Headquarters)

HYPERNEX Wide-open D3600 4 sets



Grand Hyatt Seoul

HYPERNEX D3600 2 sets



Banyan Tree Club & Spa Seoul

HYPERNEX D3600 1 sets



PARC 1

HYPERNEX Wide-open D3000 4 sets



